

Accessories

Antennas

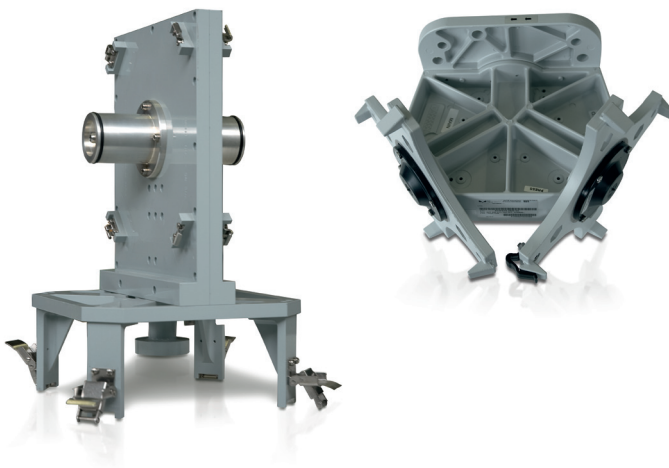


Main Features

- 0.3, 0.6, 0.8, 0.9, 1.2, 1.8, 2 and 3 m. Available for Direct Mount Option to the ODU (patented Circular WG solution, for Freq. > 11 GHz) or for Remote Mount Bracket (for ODU installation).

Ask to our Technical Department for specific Data Sheet.

Directional Couplers



Main Features

- The Directional Couplers are designed to allow both mechanical and electrical connections to the same antenna of two radio equipments in configuration 1+1 hot stand-by.

Ask to our Technical Department for specific Data Sheet.

Brackets



Main Features

- Mandatory for Antenna without Direct Mount Adaptor.
- Available in several types and configurations.

Ask to our Technical Department for specific Data Sheet.

Batteries and Chargers



Main Features

Ask to our Technical Department for specific Data Sheet.

Installation Kits



Main Features

Skylinks can provide all the installation kits: cables, wave-guides, connectors, flanges and others.

Ask to our Technical Department for specific Data Sheet.

Professional Routers



Main Features

Ask to our Technical Department for specific Data Sheet.